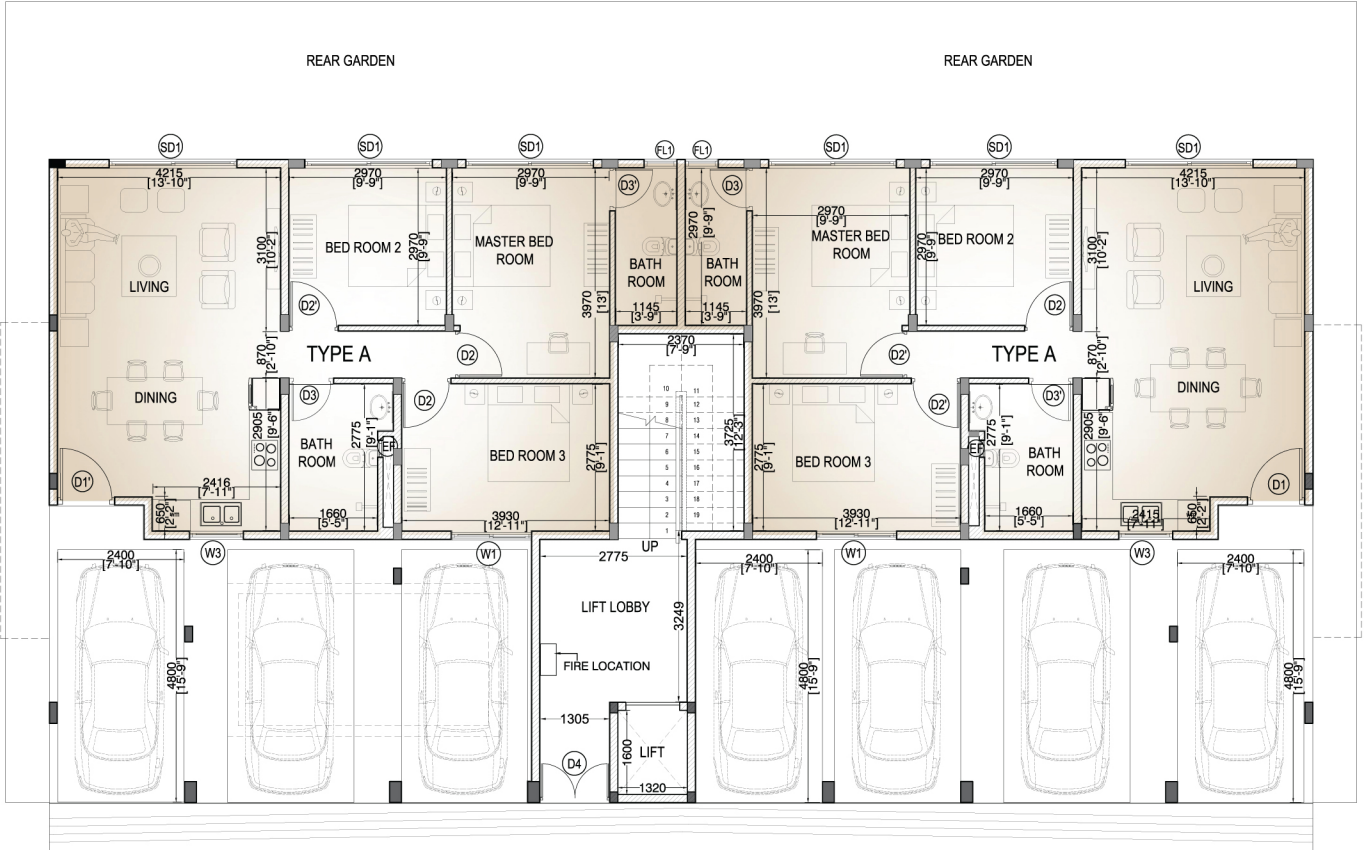


**14 PERCH
2BR / 3BR
4BR / 5BR
HOUSING UNITS**



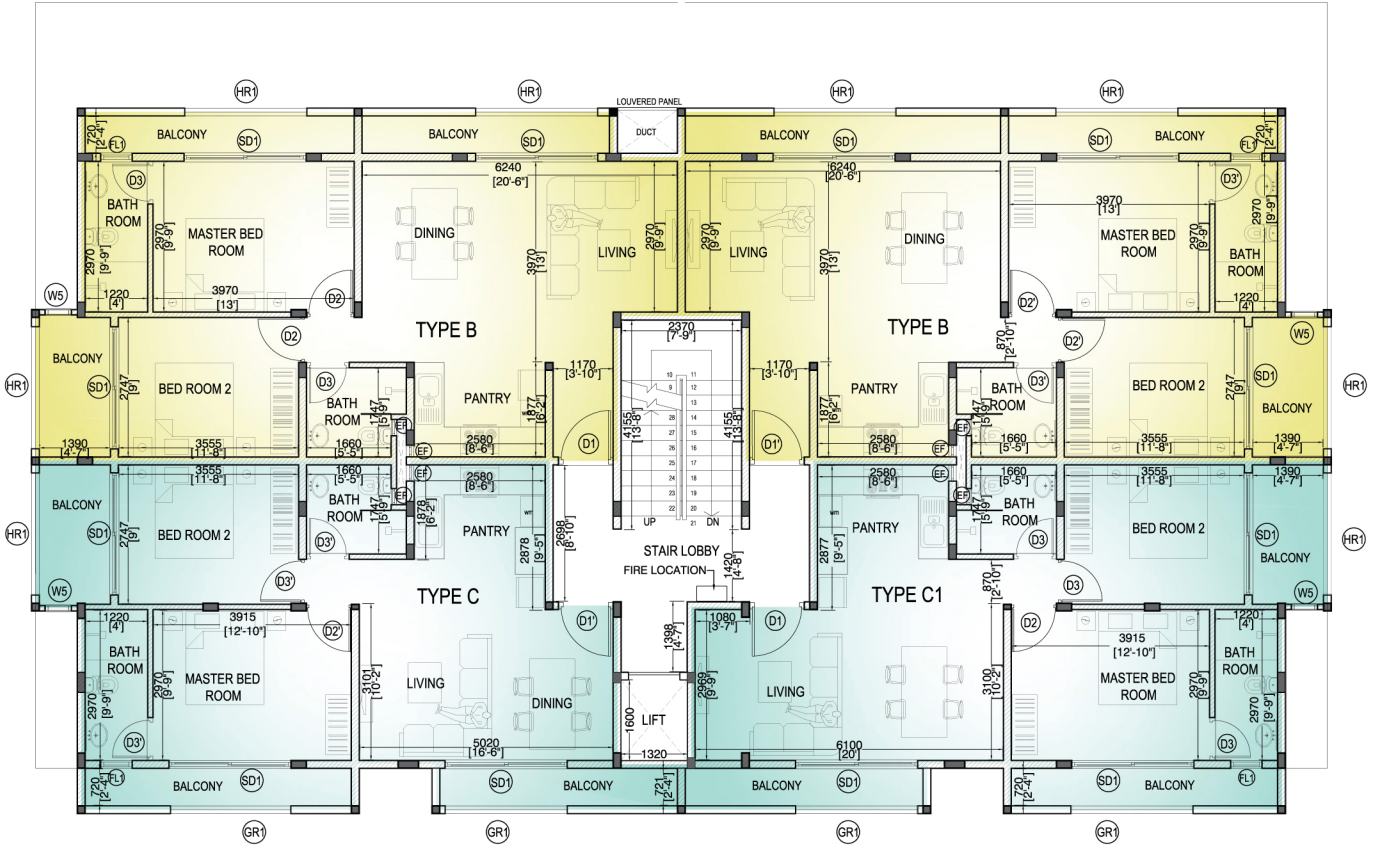
CUSTER PRIVATE APARTMENTS

GROUND FLOOR PLAN



14 PERCH TYPE A (980 SQFT)
3 BEDROOMS | LIVING / DINING | 2 BATHROOM

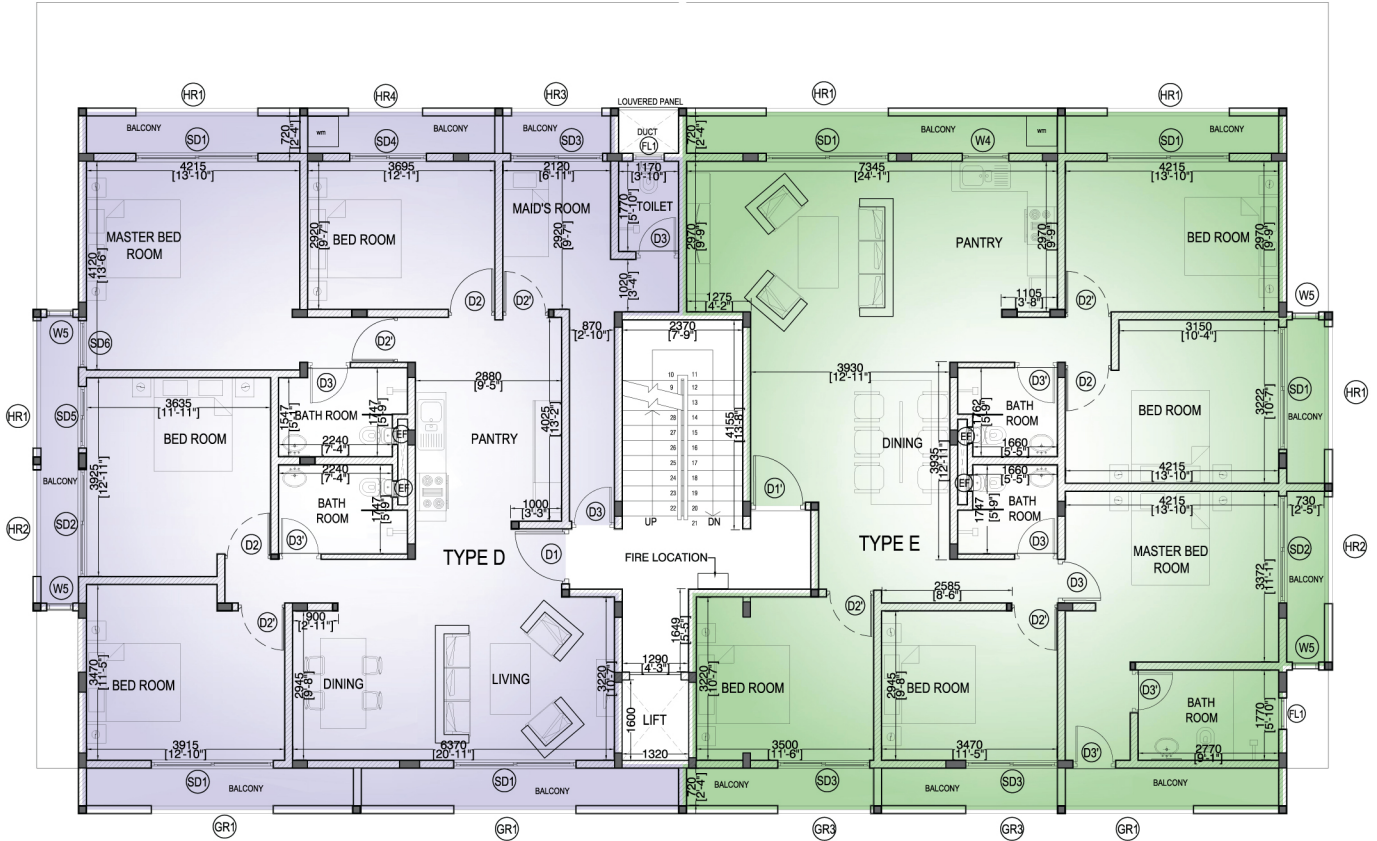
FIRST FLOOR PLAN



14 PERCH TYPE B (1020 SQFT)
 2 BEDROOMS | LIVING / DINING
 2 BATHROOMS | PANTRY | BALCONY

14 PERCH TYPE C (965 SQFT)
 2 BEDROOMS | LIVING / DINING
 2 BATHROOM | PANTRY | BALCONY

SECOND FLOOR PLAN



14 PERCH TYPE D (1870 SQFT)

4 BEDROOMS WITH MAID'S ROOM | LIVING / DINING
 2 BATHROOM WITH MAID'S TOILET | PANTRY | BALCONY

14 PERCH TYPE E (1900 SQFT)

5 BEDROOMS | LIVING / DINING
 3 BATHROOMS | PANTRY | BALCONY



Apartment Units

Apartment living is exemplified within the beauty of a park with all its exuberant life.

Each housing block consists of four exquisite apartments, where you could enjoy your privacy.



Comfortable and Practical Living





THE LARGEST GATED HOUSING DEVELOPMENT

Where Leisure is Redefined with a Sense of Security

At Central Park Ja-Ela, your life will be complete with pleasure and bliss. Cast your worries away and enjoy the pool, clubhouse, gymnasium, basketball court and the rest of amenities with 24 hour security.



Everything you could ask to live a wholesome life...

- 24 x 7 Security
- CCTV Surveillance
- Mini Market
- ATM Facility
- Bill Paying Facility
- Book Shop
- Salon
- Area for Tuition Classes
- Medical Centre
- Pastry Shop
- Business Centre
- Roof Terrace Party Area
- Office Room
- Day Care Centre
- Kids Play Area - Indoor
- Laundry Service
- Café
- Garbage Drive Through
- Foot Relaxing Path
- Herbal Garden
- Spice Garden
- Outdoor Gymnasium
- Natural Trail
- Outdoor BBQ Area
- Reception Lounge
- Open Pavilion Facing Pool in Ground Floor
- Open Function Hall Facing Pool in First Floor
- Kids Pool
- Swimming Pool
- Fully Equipped Gymnasium
- Steam Room
- Jogging Track
- Kids Play Zone - Outdoor
- Covered Function Hall Ground Floor
- Vehicle Charging Station
- Washing Bay
- Basketball Court
- Clubhouse
- Yoga Centre
- Wellness Centre
- Visitor's Parking
- Driver's Quarters
- Maid's Quarters

Over 40+ Amenities to Enjoy

Find us on Google Maps
 "Green Park Ja-Ela by Kelsey Homes"



Katunayake



Highway
Entrance



Port City*

*Port City will be 30 minutes away in 2022 via the Port Access Elevated Highway

Gated Development Spread across 15 Acres



20+ LOCATED CITIES | 235+ CONDO PROJECTS | 3500+ CONDO UNITS



KELSEY HOMES
40 Years Housing Excellence

9A, De Fonseka Place, Bambalapitiya,
Colombo 04, Sri Lanka.



☎ 0770 774 774
 ☎ 0770 773 773
 ☎ 0777 546 546